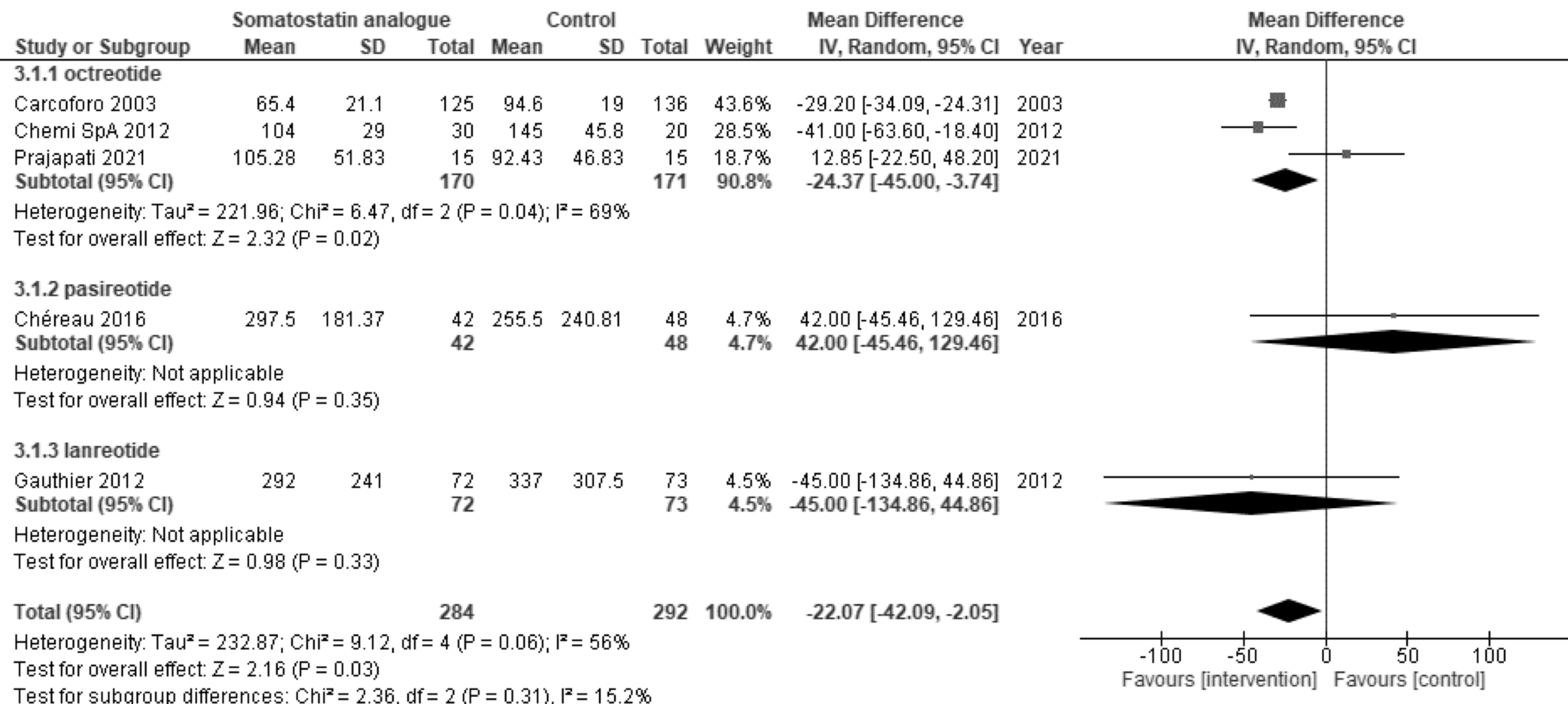
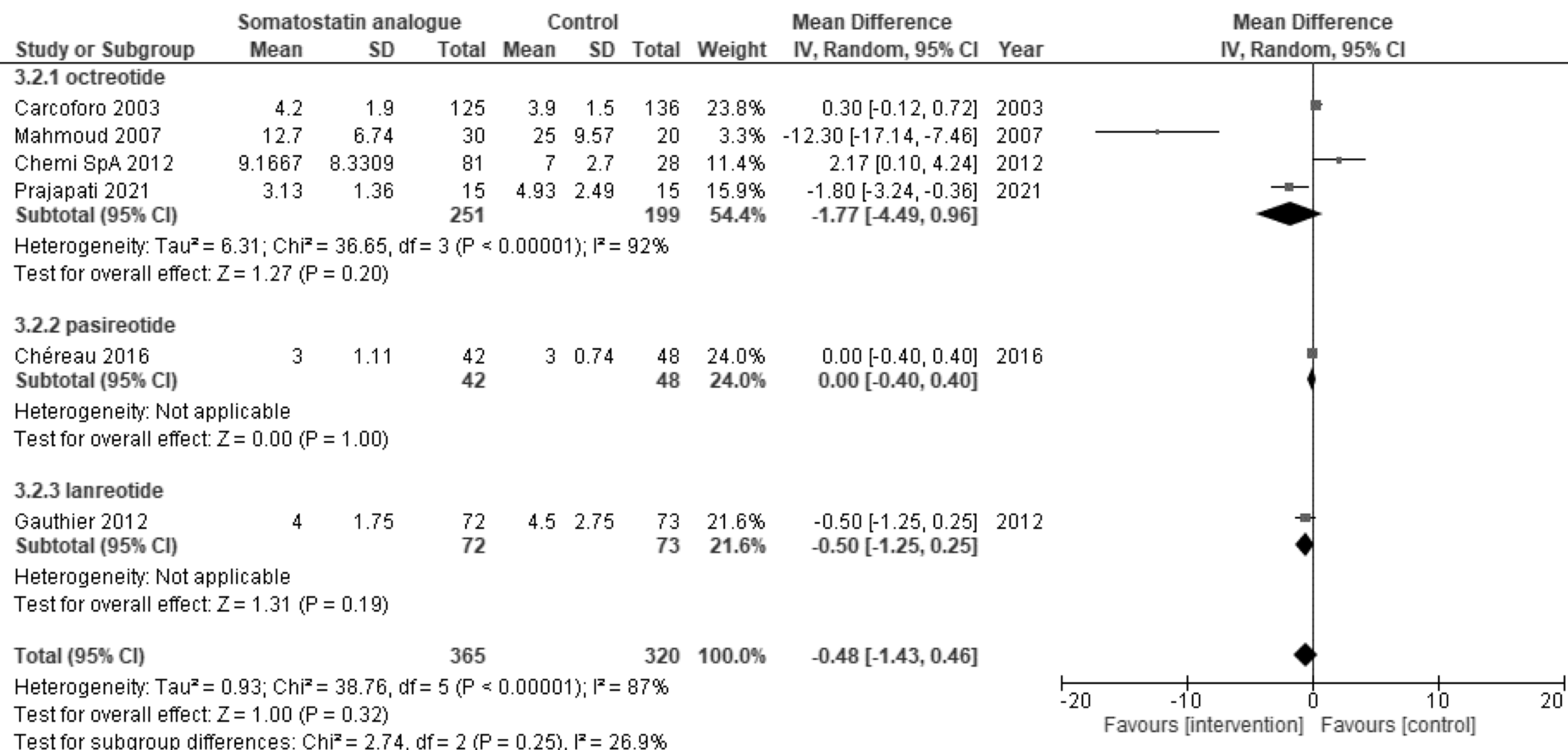


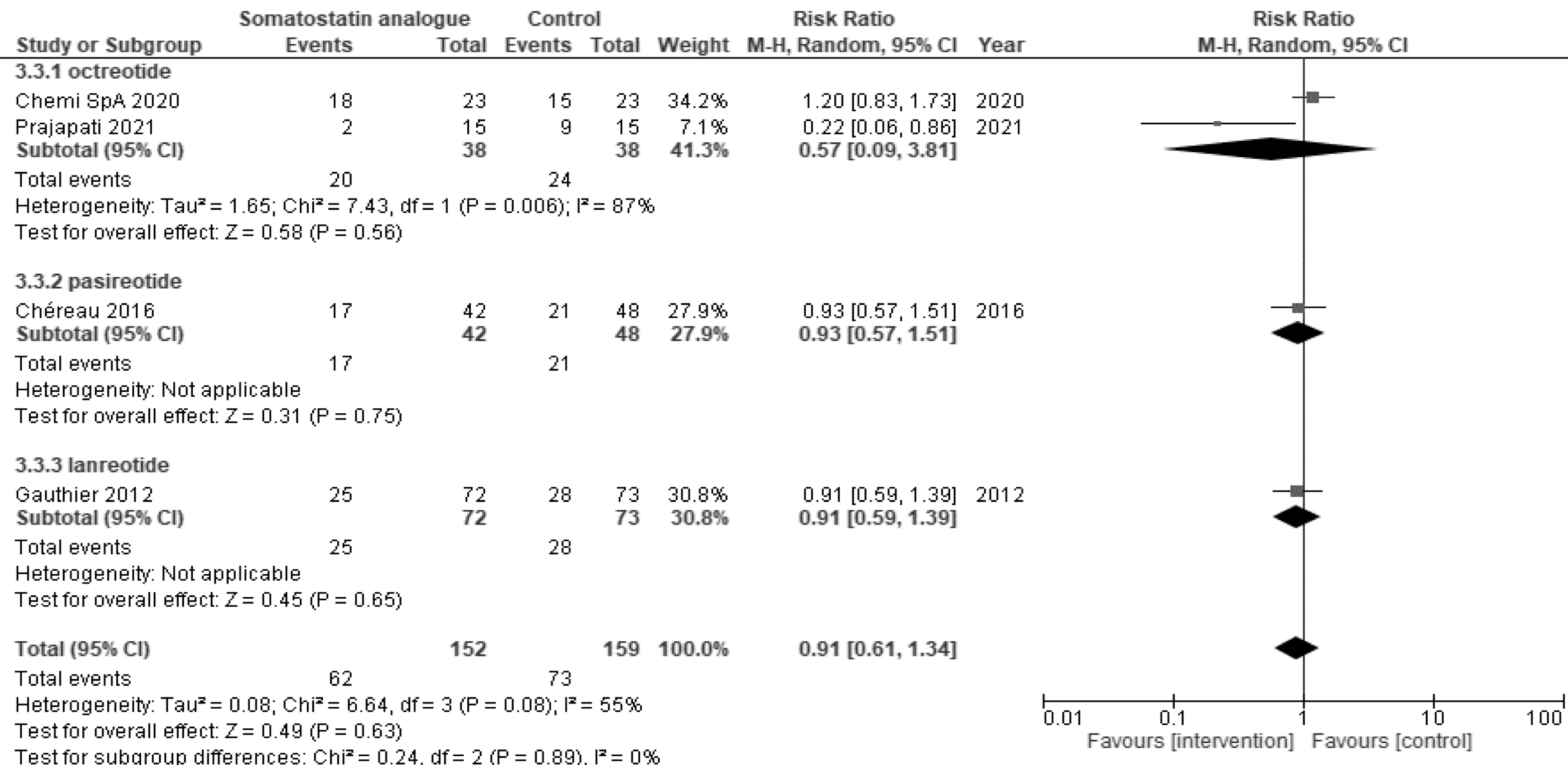
Appendix Figure 1A



Appendix Figure 1B



Appendix Figure 1C

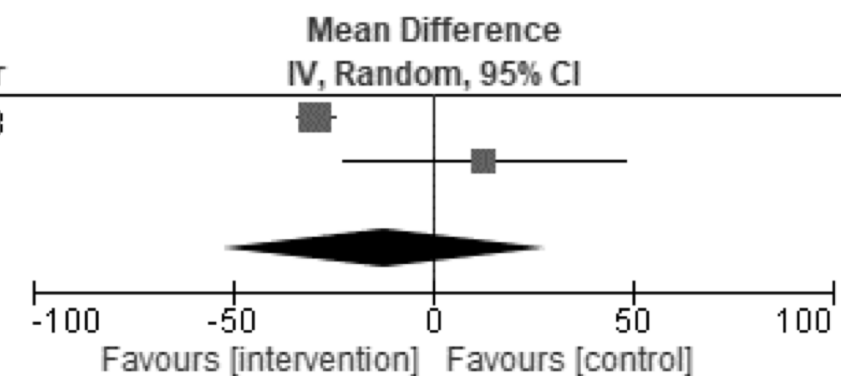


Appendix Figure 2A

Study or Subgroup	Somatostatin analogue			Control			Weight	Mean Difference IV, Random, 95% CI	Year
	Mean	SD	Total	Mean	SD	Total			
Carcoforo 2003	65.4	21.1	125	94.6	19	136	59.0%	-29.20 [-34.09, -24.31]	2003
Prajapati 2021	105.28	51.83	15	92.43	46.83	15	41.0%	12.85 [-22.50, 48.20]	2021
Total (95% CI)			140			151	100.0%	-11.97 [-52.50, 28.56]	

Heterogeneity: $\tau^2 = 718.35$; $\chi^2 = 5.33$, $df = 1$ ($P = 0.02$); $I^2 = 81\%$

Test for overall effect: $Z = 0.58$ ($P = 0.56$)

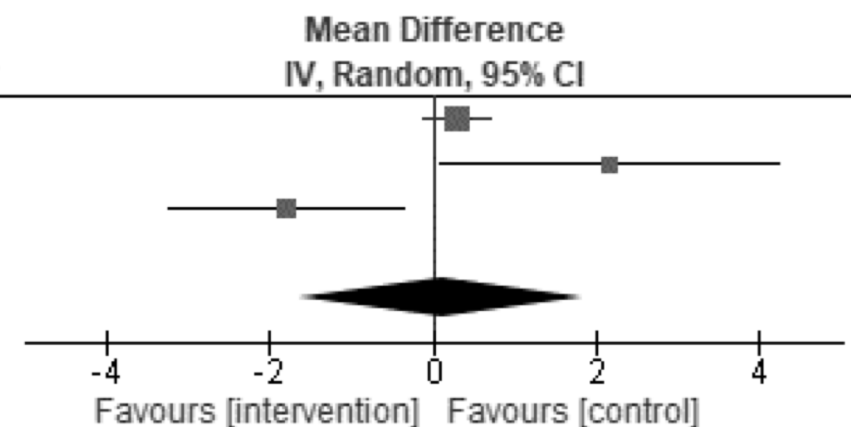


Appendix Figure 2B

Study or Subgroup	Somatostatin analogue			Control			Weight	Mean Difference IV, Random, 95% CI	Year
	Mean	SD	Total	Mean	SD	Total			
Carcoforo 2003	4.2	1.9	125	3.9	1.5	136	41.2%	0.30 [-0.12, 0.72]	2003
Chemi SpA 2012	9.1667	8.3309	81	7	2.7	28	26.2%	2.17 [0.10, 4.24]	2012
Prajapati 2021	3.13	1.36	15	4.93	2.49	15	32.6%	-1.80 [-3.24, -0.36]	2021
Total (95% CI)			221			179	100.0%	0.10 [-1.61, 1.82]	

Heterogeneity: $\tau^2 = 1.81$; $\chi^2 = 11.13$, $df = 2$ ($P = 0.004$); $I^2 = 82\%$

Test for overall effect: $Z = 0.12$ ($P = 0.91$)



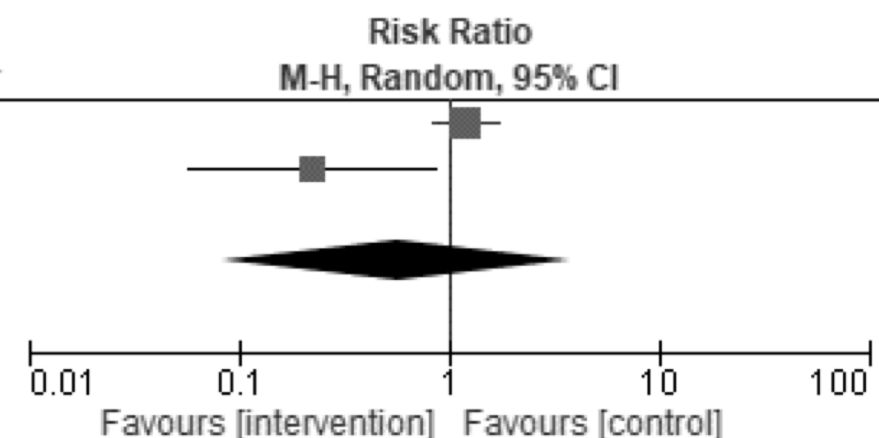
Appendix Figure 2C

Study or Subgroup	Somatostatin analogue		Control		Weight	Risk Ratio M-H, Random, 95% CI	Year
	Events	Total	Events	Total			
Chemi SpA 2020	18	23	15	23	55.8%	1.20 [0.83, 1.73]	2020
Prajapati 2021	2	15	9	15	44.2%	0.22 [0.06, 0.86]	2021
Total (95% CI)		38		38	100.0%	0.57 [0.09, 3.81]	

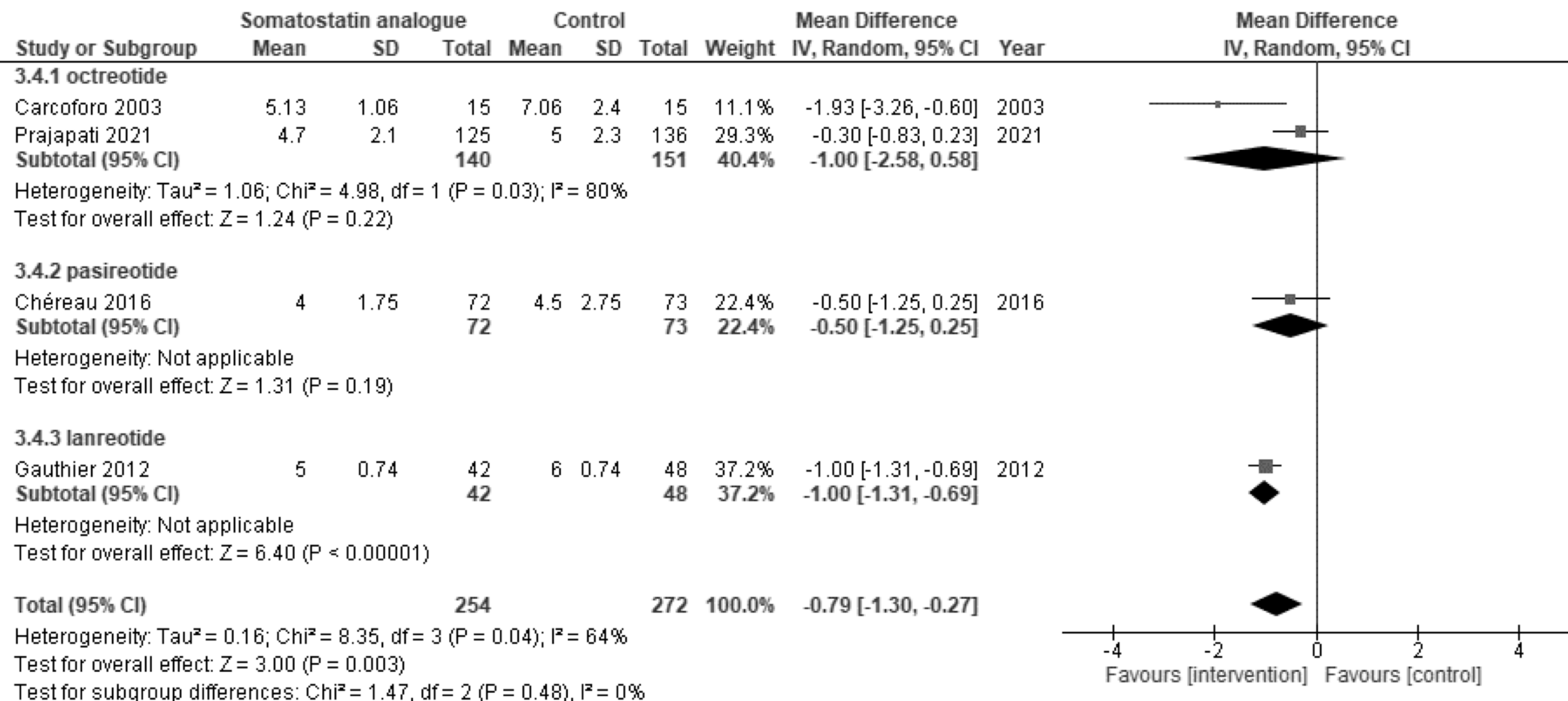
Total events: Somatostatin analogue 20, Control 24

Heterogeneity: $\tau^2 = 1.65$; $\chi^2 = 7.43$, $df = 1$ ($P = 0.006$); $I^2 = 87\%$

Test for overall effect: $Z = 0.58$ ($P = 0.56$)

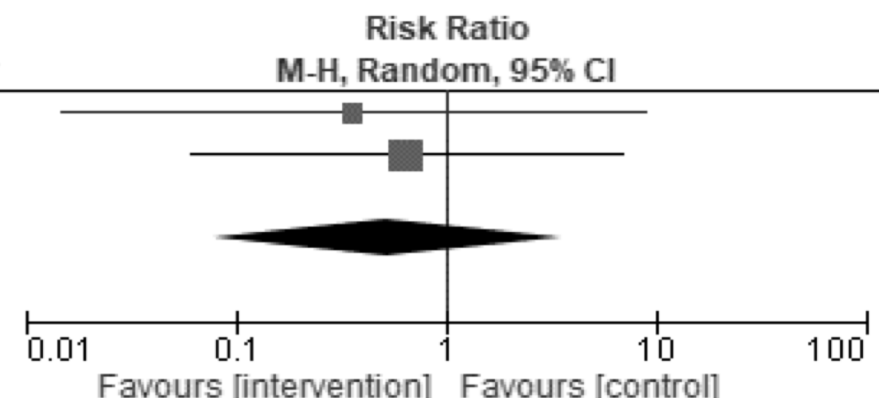


Appendix Figure 3



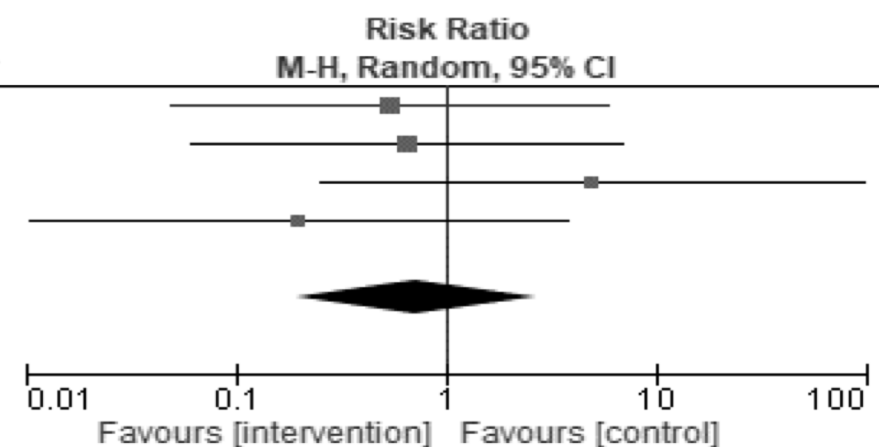
Appendix Figure 4A

Study or Subgroup	Somatostatin analogue		Control		Weight	Risk Ratio		Year
	Events	Total	Events	Total		M-H, Random, 95% CI		
Carcoforo 2003	0	125	1	136	35.4%	0.36	[0.01, 8.82]	2003
Chemi SpA 2012	2	86	1	28	64.6%	0.65	[0.06, 6.91]	2012
Total (95% CI)		211		164	100.0%	0.53	[0.08, 3.53]	
Total events	2		2					
Heterogeneity: $\text{Tau}^2 = 0.00$; $\text{Chi}^2 = 0.09$, $\text{df} = 1$ ($P = 0.77$); $I^2 = 0\%$								
Test for overall effect: $Z = 0.66$ ($P = 0.51$)								



Appendix Figure 4B

Study or Subgroup	Somatostatin analogue		Control		Weight	Risk Ratio		Year
	Events	Total	Events	Total		M-H, Random, 95% CI		
Carcoforo 2003	1	125	2	136	30.2%	0.54	[0.05, 5.93]	2003
Chemi SpA 2012	2	86	1	28	30.8%	0.65	[0.06, 6.91]	2012
Chemi SpA 2020	2	24	0	24	19.3%	5.00	[0.25, 98.96]	2020
Prajapati 2021	0	15	2	15	19.7%	0.20	[0.01, 3.85]	2021
Total (95% CI)		250		203	100.0%	0.72	[0.20, 2.69]	
Total events	5		5					
Heterogeneity: $\text{Tau}^2 = 0.00$; $\text{Chi}^2 = 2.41$, $\text{df} = 3$ ($P = 0.49$); $I^2 = 0\%$								
Test for overall effect: $Z = 0.48$ ($P = 0.63$)								



Appendix Figure 4C

Study or Subgroup	Somatostatin analogue			Control			Weight	Mean Difference		Year
	Mean	SD	Total	Mean	SD	Total		IV, Random, 95% CI		
Carcoforo 2003	5.13	1.06	15	7.06	2.4	15	42.8%	-1.93	[-3.26, -0.60]	2003
Prajapati 2021	4.7	2.1	125	5	2.3	136	57.2%	-0.30	[-0.83, 0.23]	2021
Total (95% CI)			140			151	100.0%	-1.00	[-2.58, 0.58]	
Heterogeneity: $\text{Tau}^2 = 1.06$; $\text{Chi}^2 = 4.98$, $\text{df} = 1$ ($P = 0.03$); $I^2 = 80\%$										
Test for overall effect: $Z = 1.24$ ($P = 0.22$)										

